

MANN+HUMMEL PreLine

Pre-filter for diesel fuel

PreLine – The protection system for diesel injection systems

Modern diesel engines use a higher injection pressure due to advanced performance requirements. The injection systems used have very high requirements regarding cleanliness of the fuel. This means the fuel should contain hardly any particles and practically no water (condensate).

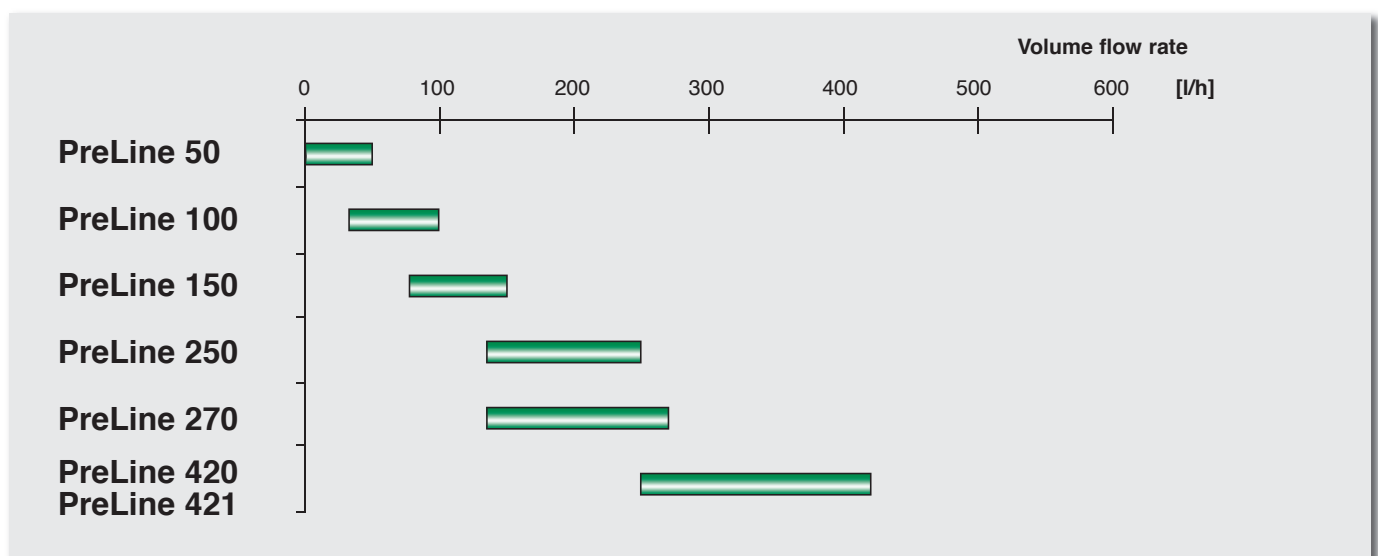
MANN+HUMMEL uses high performance multigrade media for the filtration of the fuel. The MANN+HUMMEL PreLine series separates more than 93 % according to ISO/TR 16 332 of water present in the fuel and so fulfils the requirements of leading injection system producers.

The perfectly matched interaction between the PreLine pre-filter and the MANN+HUMMEL main filter offers maximum protection

for the sensitive injection system and contributes to the economic running of your engine.



Volume flow coverage



Note:

- A number of PreLine pre-filters of the same design and size can be fitted in parallel to enable a corresponding increase in the volume flow rate.
- Use in series and/or different sizes is not foreseen.

Contents

PreLine – The protection system for diesel injection systems	Page 2
Why filtration – Why PreLine?	Page 4
MANN+HUMMEL – Filtration with system	Page 5
PreLine – Flexible in the system and application	Page 6
PreLine – Modular system for 15 to 250 kW	Page 8
PreLine 50	Page 10
PreLine 100 and 150	Page 12
PreLine 250	Page 14
PreLine – Modular system for 200 to 420 kW	Page 16
PreLine 270	Page 18
PreLine 420	Page 20
PreLine 421	Page 22
PreLine – Accessories	Page 24
Notes	Page 26
PreLine – Technical overview	folding flap
Selection of MANN+HUMMEL product catalogues	folding flap



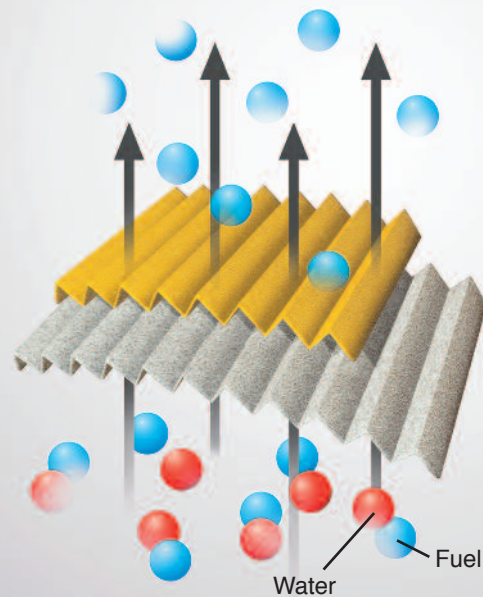
Why Filtration – Why PreLine?

The MANN+HUMMEL PreLine system exclusively uses multigrade high performance filter media which effectively protect modern common rail injection systems.

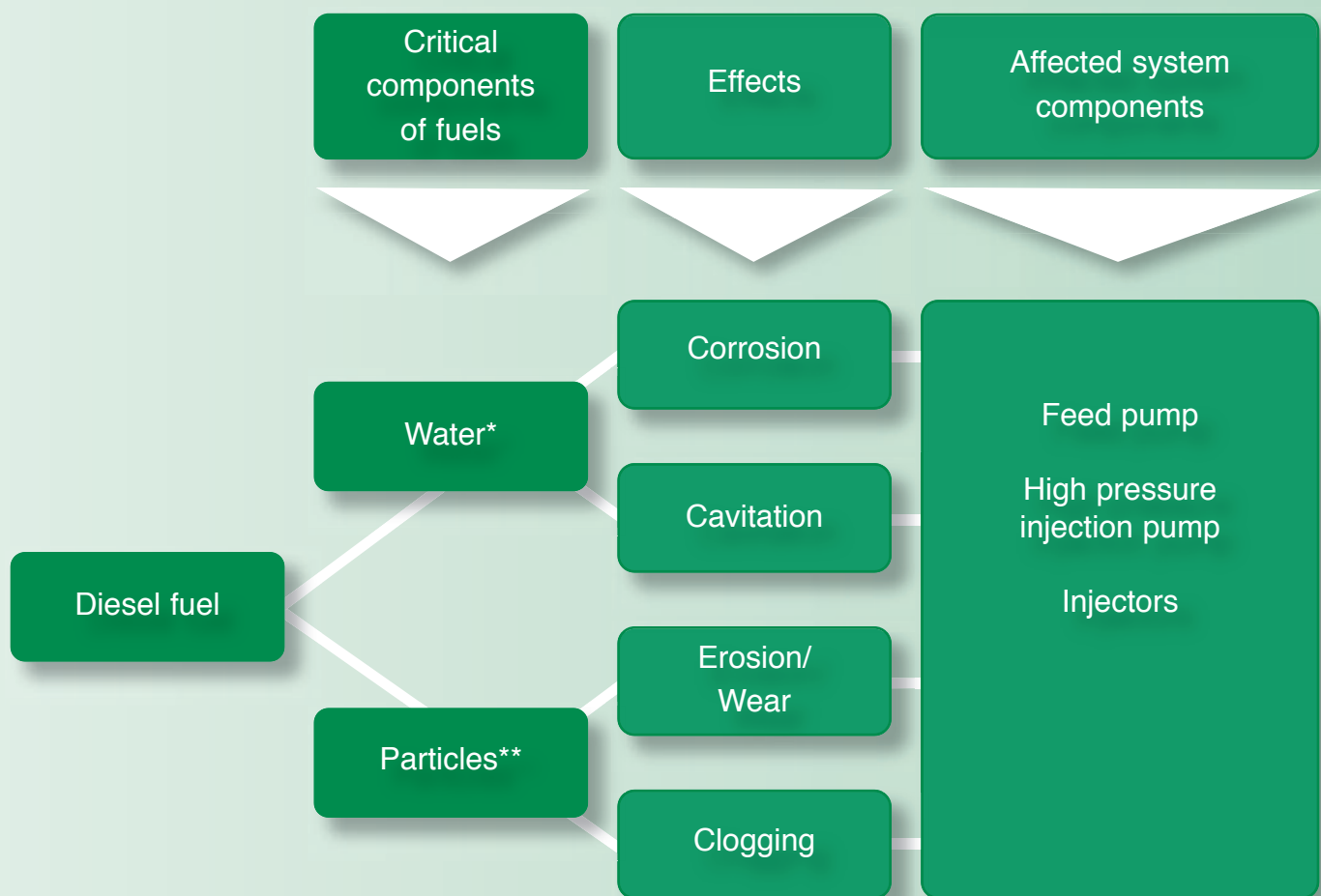
This applies to all suitable main filters which are also fitted with this high performance media.

multigrade
high performance
filtration

Diagram of water separation with the multigrade high performance filter medium



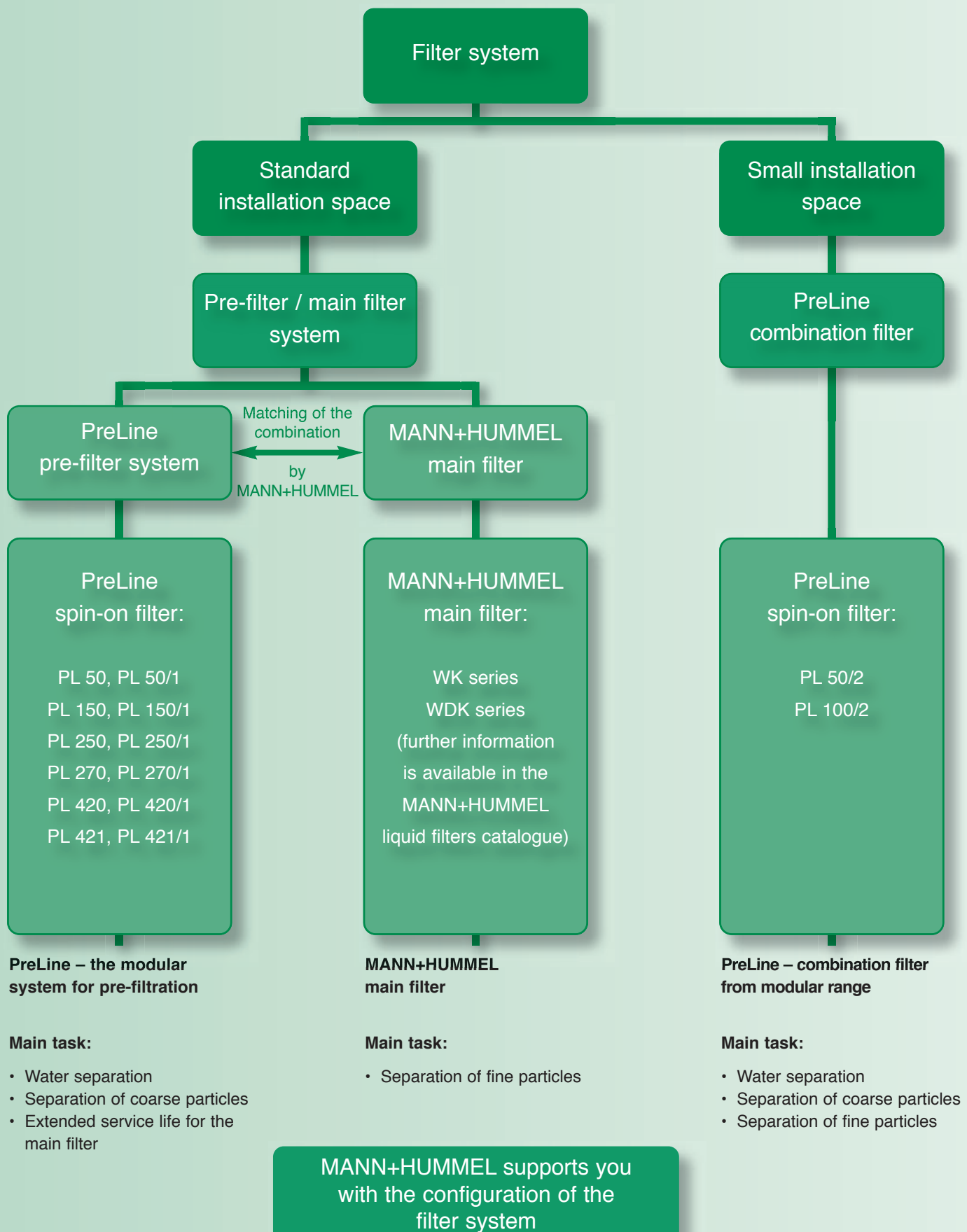
Cause and effect of contamination



* Free water

** Critical particle size: $\geq 4 \mu\text{m}$

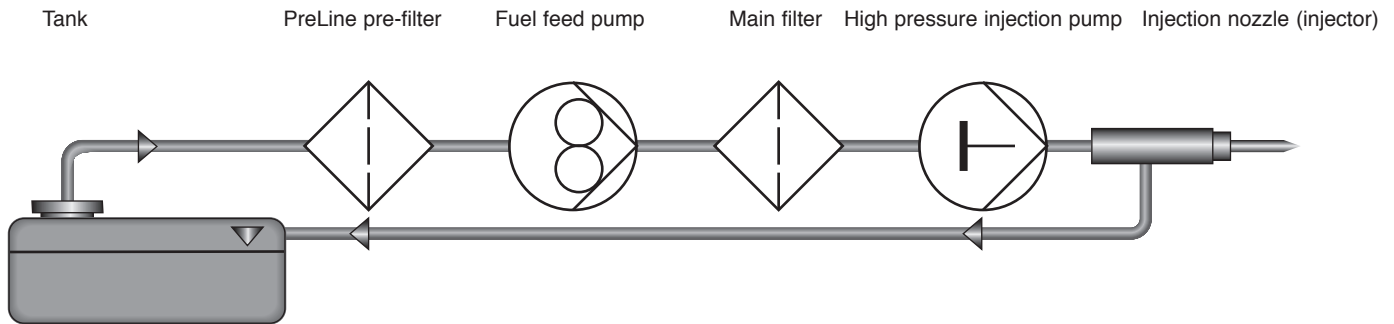
MANN+HUMMEL – Filtration with system



PreLine – Flexible in the system and application

Case 1

PreLine before the feed pump (suction side), main filter after the feed pump (delivery side)



Advantage

The PreLine system protects the feed pump against ingress of water and coarse particles and extends the service life of the main filter

The flow resistance increases as the filter retains more contaminants. Given the delivery head of the fuel in the tank, there is a relatively small negative pressure available on the suction side of the feed pump.

Due to extremely low initial resistance, **case 1 provides the best solution for most applications** on the market. In addition, PreLine protects the feed pump system.

Recommendation:

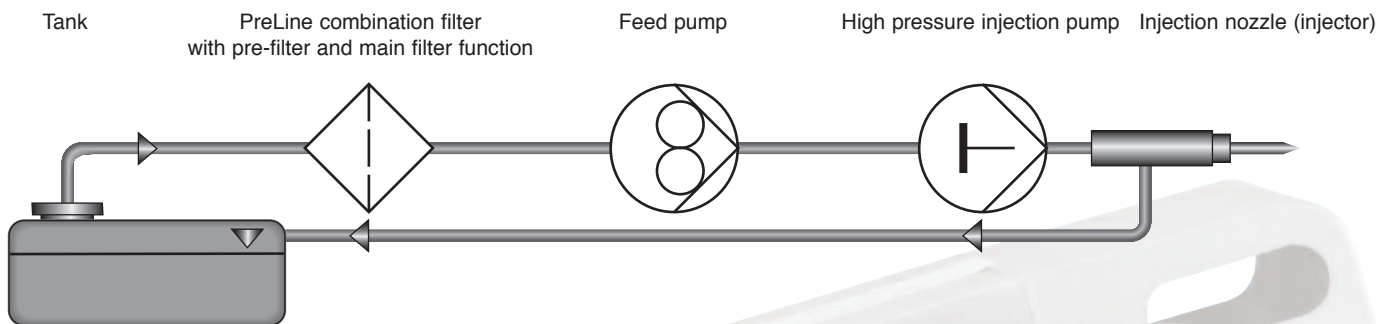
maintain the suction height as low as possible. Integrate a non-return valve in the feed line

Disadvantage

–

Case 2

PreLine combination filter before the feed pump (suction side)



Advantage

The PreLine combination filter saves installation space

Disadvantage

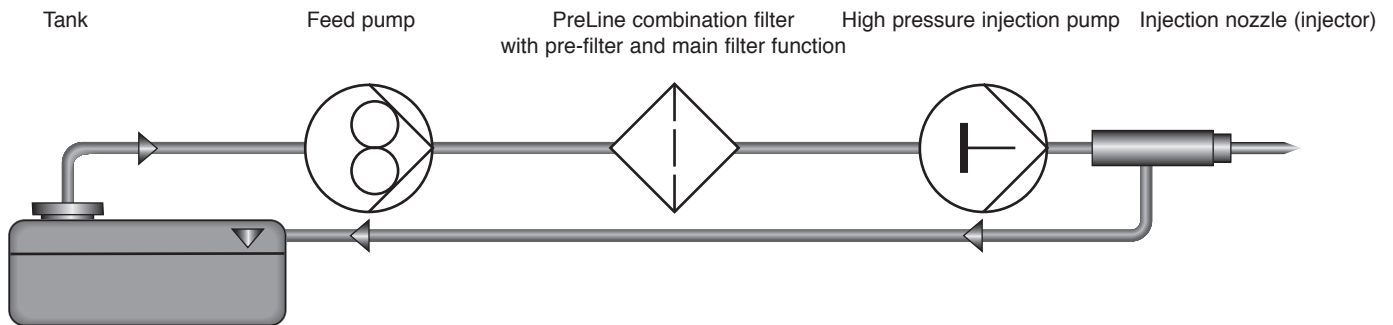
Tight installation space leads to reduced service life



PreLine – Flexible in the system and application

Case 3

PreLine combination filter after the feed pump (delivery side)



Advantage

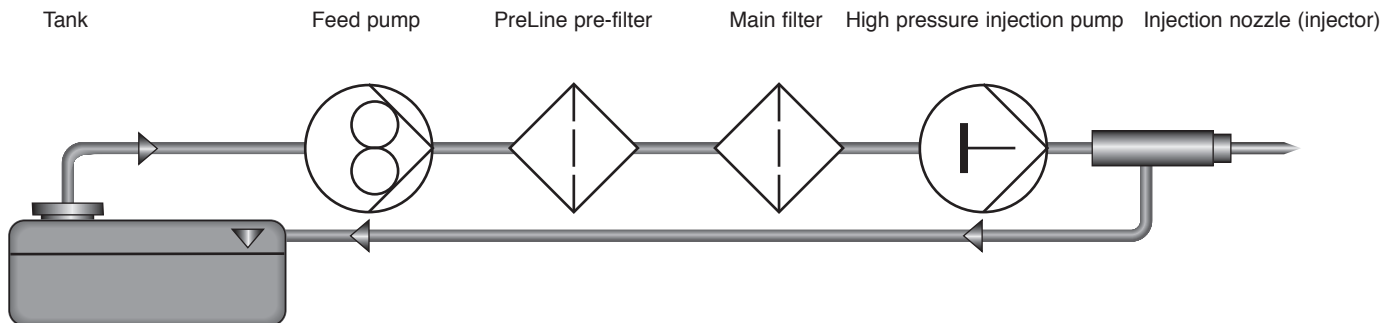
The PreLine combination filter saves installation space

Disadvantage

Tight installation space leads to reduced service life

Case 4

PreLine and main filter after the feed pump (delivery side)



Advantage

Usable with high delivery heads

Disadvantage

No protection for the feed pump

If technical considerations or a very high delivery head prevent use according to case 1 and an additional pump in the tank is not possible, the PreLine system can be used as in case 4.

It must be taken into account that in this case it is not possible to protect the feed pump with the PreLine system.

Service life of filters

MANN+HUMMEL tests filters according to the prevailing international standards. The service life of a filter is a function of:

- the size of the filter
- the fuel consumption
- the filter medium (separation efficiency)
- in particular the real contamination level of the fuel

An exact definition of the service life of a filter in the field is therefore not possible.

In practice, fluctuations between 250 to 1,000 operational hours are possible.

MANN+HUMMEL offers support in the development phase with the exact configuration of the filter and with tests.

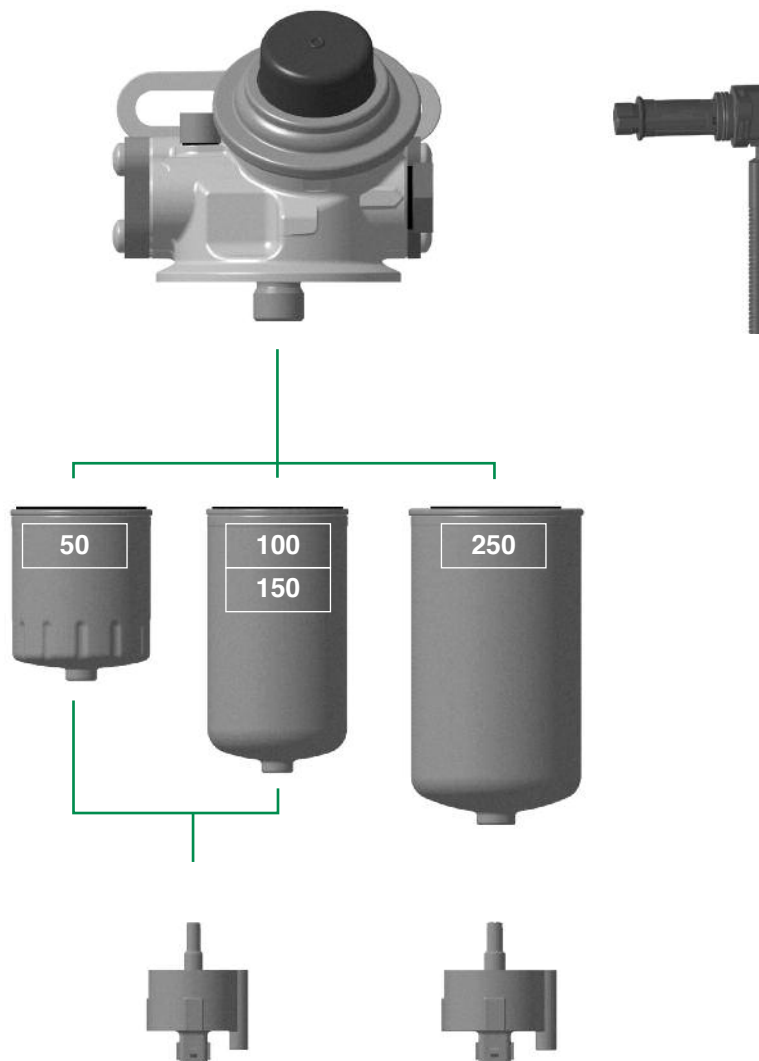
PreLine modular system (15 to 250 kW)

Filter head with hand pump

Diesel heater with 12 or 24 volt

Spin-on filter
PL 50 or PL 50/1
or PL 50/2
PL 100/2
PL 150 or PL 150/1
PL 250 or PL 250/1

Water level sensor
12/24 volt with M8x1.25
or M12x1.5 thread



Filtration with system

MANN+HUMMEL offers a compact modular system for diesel engines with outputs between 15 to approx. 250 kW.

This PreLine-series includes the following sizes:

PreLine 50
PreLine 50/1
PreLine 50/2
PreLine 150
PreLine 150/1
PreLine 100/2
PreLine 250
PreLine 250/1

Application areas

High performance filtration for all diesel aggregates from approx. **15 kW to 250 kW** with less installation space.

The PreLine pre-filter offers reliable protection against water and particles for modern common rail injection systems, in-line injection pumps and distribution injection pumps.

PreLine also perfectly protects every diesel engine under

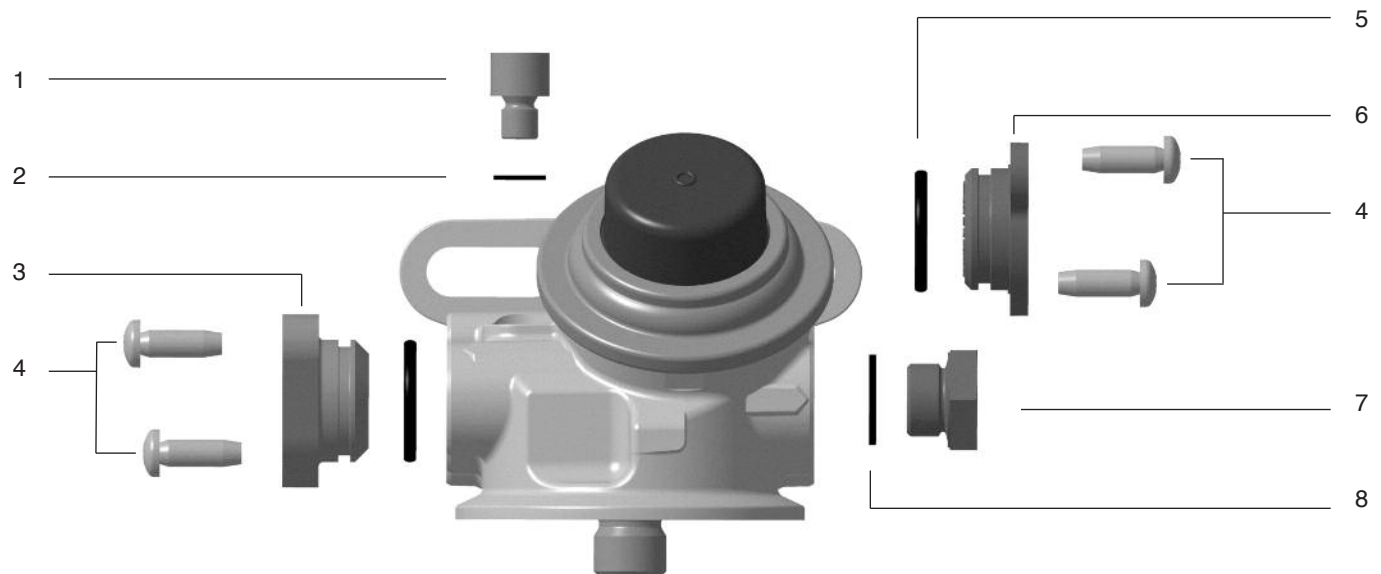
difficult conditions in construction machines and many other applications such as skid steer loaders, backhoe loaders, tractors, forklifts, mobile and stationary compressors.

The advantages at a glance:

- Flexible modular system
- Compatible to 100 % of FAME fuels
- High performance Filtration for a tight installation space
- Integrated water collector in filter

- Easy to service
- 45° positioned hand pump
- Extremely stable design for all application conditions
- High water separation (e.g. ≥ 93 % acc. to ISO/TR 16 332)
- High particle separation (e.g. ≥ 95 % for $4 \mu\text{m}$ (c) particles)
- Diesel heater (option)
- Water level sensor (option)

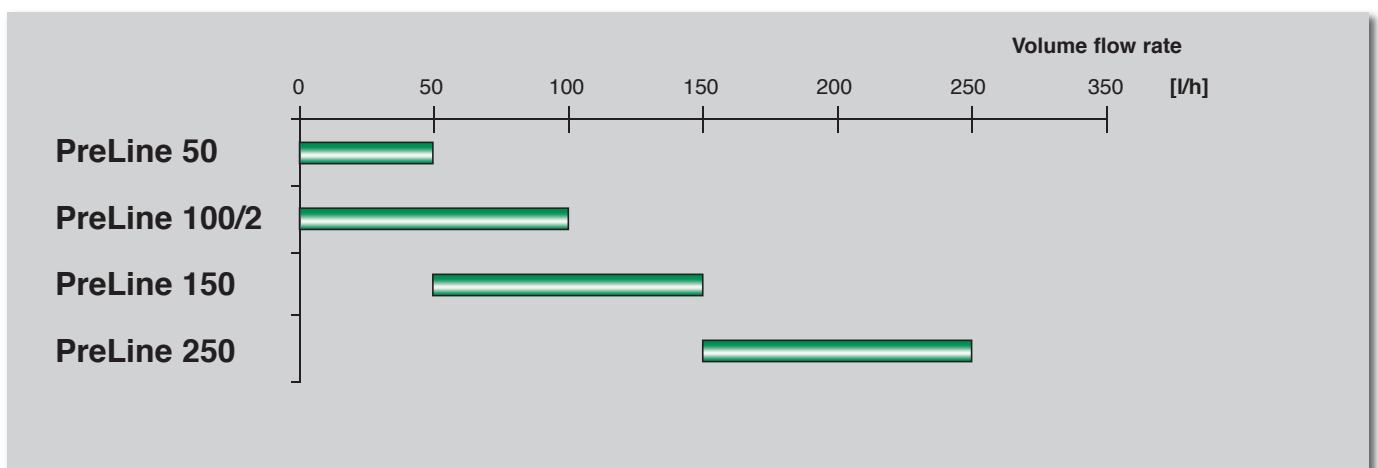
PreLine filter head (15 to 250 kW)



Spare parts list filter head PreLine

Pos.	Description	Order number
1	Screw plug for venting	21 008 05 311
2	Seal for venting screw plug	01 901 01 008
3	Sealing cover (incl. O ring)	66 606 47 141
4	Pins for sealing cover	01 163 06 018
5	O ring for adapter	23 023 32 141
6	Adapter for line M16x1.5	66 500 47 101
7	Plug screw inlet/outlet	01 440 16 001
8	Seal for plug screw inlet/outlet	01 901 01 016

Volume flow coverage



PreLine 50

Main features and advantages

- Use with diesel fuel
DIN ISO 590 (5 % FAME)
DIN 51 628 (7 % FAME)
Kerosene JET-A1
- Up to 50 l/h volume flow rate
- Use of multigrade high performance media
- 93 % water separation
- Modular system with excellent flexibility
- Easy to service
- Integrated, effective and easy to handle hand pump with 45° position to drain off water and for priming during service

- Integrated water collector
- Parallel operation possible with a number of systems
- PreLine 50/2 as a combined pre-filter and main filter usable in applications where installation space is critical

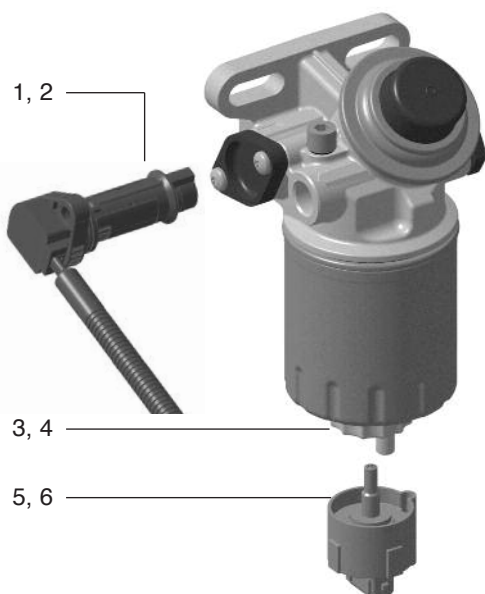
Application areas

All modern common rail diesel engines used in agricultural and construction machines and industrial aggregates.

Further specifications are listed on pages 28 and 29.



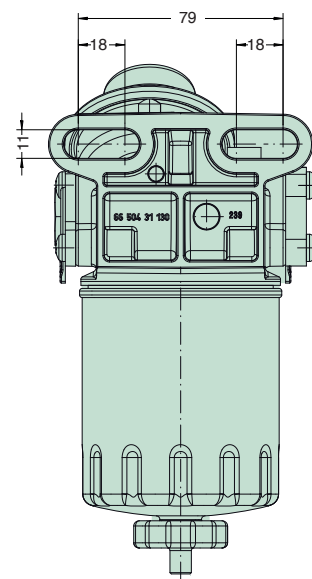
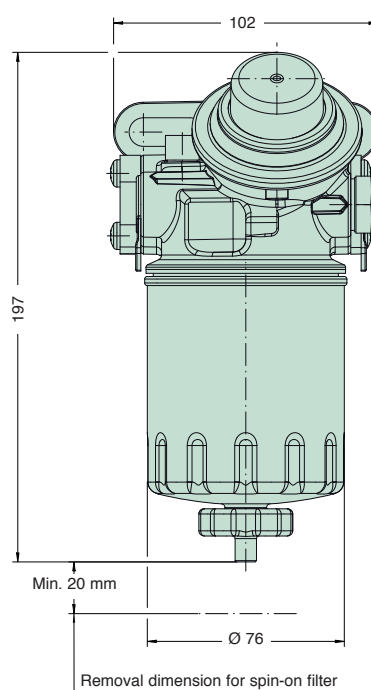
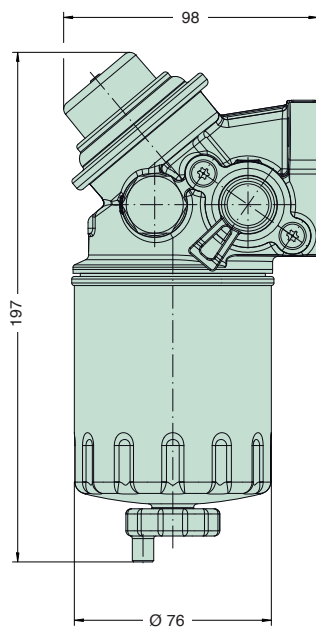
Description	Medium	Order number complete filter	MANN-FILTER spin-on filter	Water level sensor M8x1.25	Hand pump	Water collector	Diesel heater with bi-metal control	
							12 volt	24 volt
PreLine 50	PFO	66 401 62 140 66 401 62 144	PL 50	yes -	yes	integrated in spin-on filter	DH 12 (option)	DH 24 (option)
PreLine 50/1	PF	66 401 62 150 66 401 62 154	PL 50/1	yes -				
PreLine 50/2	HE	66 401 62 180 66 401 62 184	PL 50/2	yes -				



Spare parts list PreLine 50

Pos.	Description	Order number
1	Heater (option, incl. seal)	DH 12 DH 24
2	Seal for heater	23 023 32 141
3	Seal for water drain screw plug	23 009 31 182
4	Water drain screw plug	21 008 05 269
5	Sensor M8x1.25	59 020 70 730
6	Seal for sensor M8x1.25	23 009 31 182

PreLine 50



Dimensions in mm



Specifications PreLine 50

Filter medium	Initial separation efficiency acc. to ISO 19 438:2003			PreLine 50	PreLine 50/1	PreLine 50/2
	Classes	4 µm (c)	6 µm (c)			
	Multigrade F_PFO	≥ 10 %	≥ 30 %	X		
	Multigrade F_PF	≥ 40 %	≥ 70 %		X	
	Multigrade HE	≥ 95 %	≥ 99.5 %			X
Nominal volume flow rate	50 l/h					
Application	Pre-filter function with water separation			X	X	X
	Additional main filter function			-	-	X
Water separation	acc. to ISO/TR 16 332			> 93 %		
Operating pressure	Filter head and spin-on filter			4 bar		
Filter head	Connections	Inlet raw side		Right and left each with 2 x M16x1.5 Permanently installed hand pump Mounting for diesel heater right or left as required		
		Outlet clean side				

PreLine 150 and 100

Main features and advantages

- Use with diesel fuel
DIN ISO 590 (5 % FAME)
DIN 51 628 (7 % FAME)
Kerosene JET-A1
- Up to 150 or 100 l/h
volume flow rate
- Use of multigrade high
performance media
- 93 % water separation
- Modular system with
excellent flexibility
- Easy to service
- Integrated, effective and
easy to handle hand pump
with 45° position to drain
off water and for priming
during service

- Integrated water collector
- Parallel operation possible
with a number of systems
- PreLine 100/2 as a com-
bined pre-filter and main
filter usable in applica-
tions where installation space is
critical

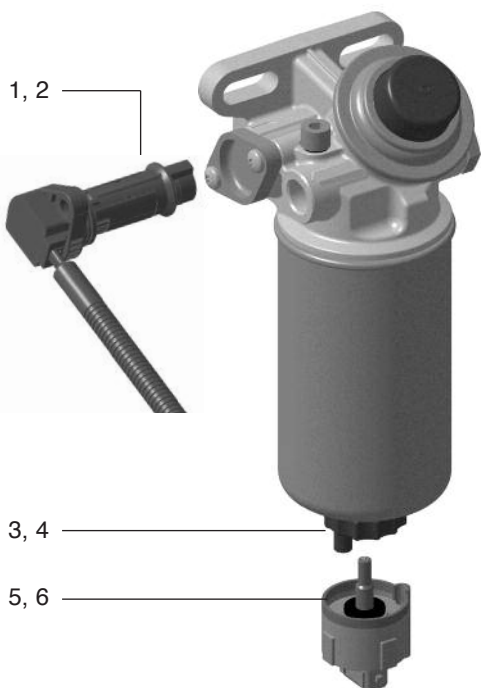
Application areas

All modern common rail
diesel engines used in
agricultural and construction
machines and industrial
aggregates.

**Further specifications are
listed on pages 28 and 29.**



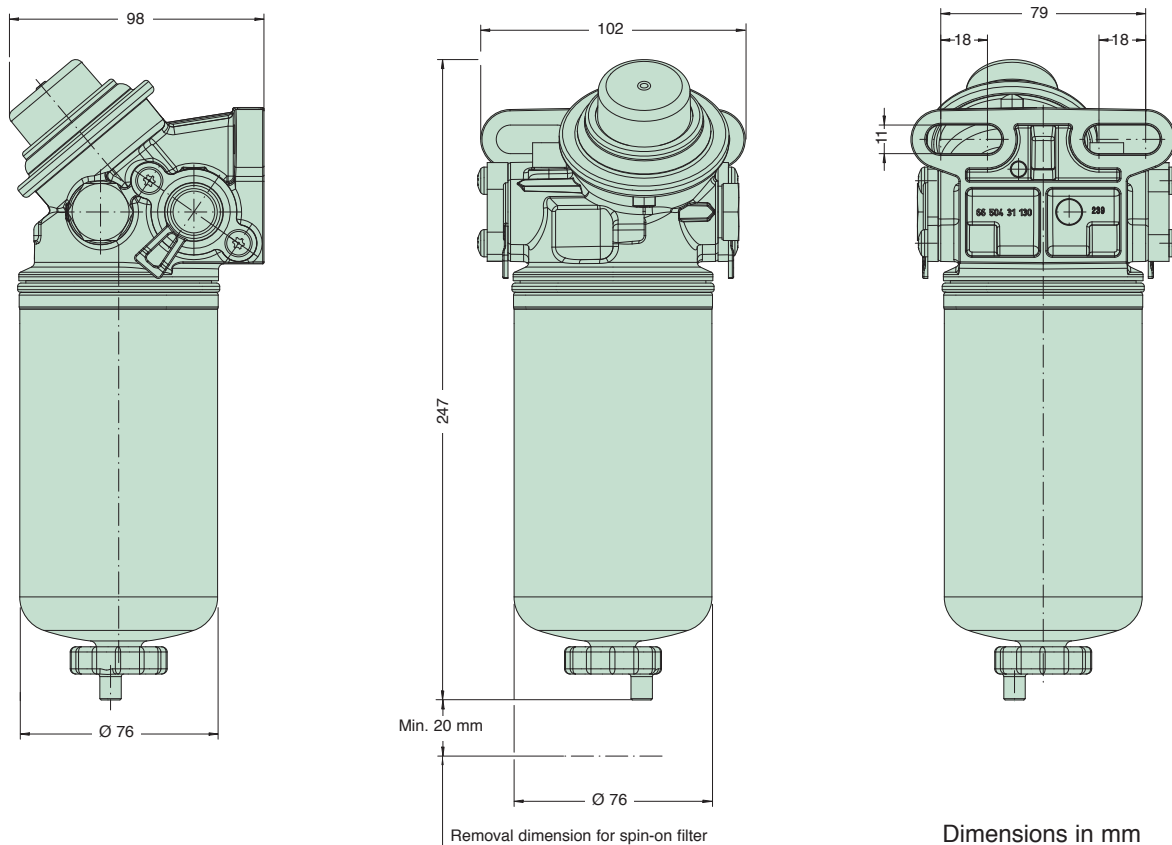
Description	Medium	Order number complete filter	MANN- FILTER spin-on filter	Water level sensor M8x1.25	Hand pump	Water collector	Diesel heater with bi-metal control	
							12 volt	24 volt
PreLine 150	PFO	66 402 62 140 66 402 62 144	PL 150	yes -	yes	integrated in spin-on filter	DH 12 (option)	DH 24 (option)
PreLine 150/1	PF	66 402 62 150 66 402 62 154	PL 150/1	yes -				
PreLine 100/2	HE	66 402 62 180 66 402 62 184	PL 100/2	yes -				



Spare parts list PreLine 150/100

Pos.	Description	Order number
1	Heater (option, incl. seal)	DH 12
		DH 24
2	Seal for heater	23 023 32 141
3	Seal for water drain screw plug	23 009 31 182
4	Water drain screw plug	21 008 05 269
5	Sensor M8x1.25	59 020 70 730
6	Seal for sensor M8x1.25	23 009 31 182

PreLine 150 and 100



Specifications PreLine 150 und 100

Filter medium	Initial separation efficiency acc. to ISO 19 438:2003			PreLine 150	PreLine 150/1	PreLine 100/2
	Classes	4 µm (c)	6 µm (c)			
	Multigrade F_PFO%	≥ 10 %	≥ 30 %	X		
	Multigrade F_PF	≥ 40 %	≥ 70 %		X	
	Multigrade HE	≥ 95 %	≥ 99.5 %			X
Nominal volume flow rate				150 l/h		100 l/h
Application	Pre-filter function with water separation			X	X	X
	Additional main filter function			-	-	X
Water separation	acc. to ISO/TR 16 332			> 93 %		
Operating pressure	Filter head and spin-on filter			4 bar		
Filter head	Connections	Inlet raw side		Right and left each with 2 x M16x1.5 Permanently installed hand pump Mounting for diesel heater right or left as required		
		Outlet clean side				

PreLine 250

Main features and advantages

- Use with diesel fuel
DIN ISO 590 (5 % FAME)
DIN 51 628 (7 % FAME)
Kerosene JET-A1
- Up to 250 l/h volume flow rate
- Use of multigrade high performance media
- 93 % water separation
- Modular system with excellent flexibility
- Easy to service
- Integrated, effective and easy to handle hand pump with 45° position to drain off water and for priming during service

- Integrated water collector
- Parallel operation possible with a number of systems

Application areas

All modern common rail diesel engines used in agricultural and construction machines and industrial aggregates.

Further specifications are listed on pages 28 and 29.



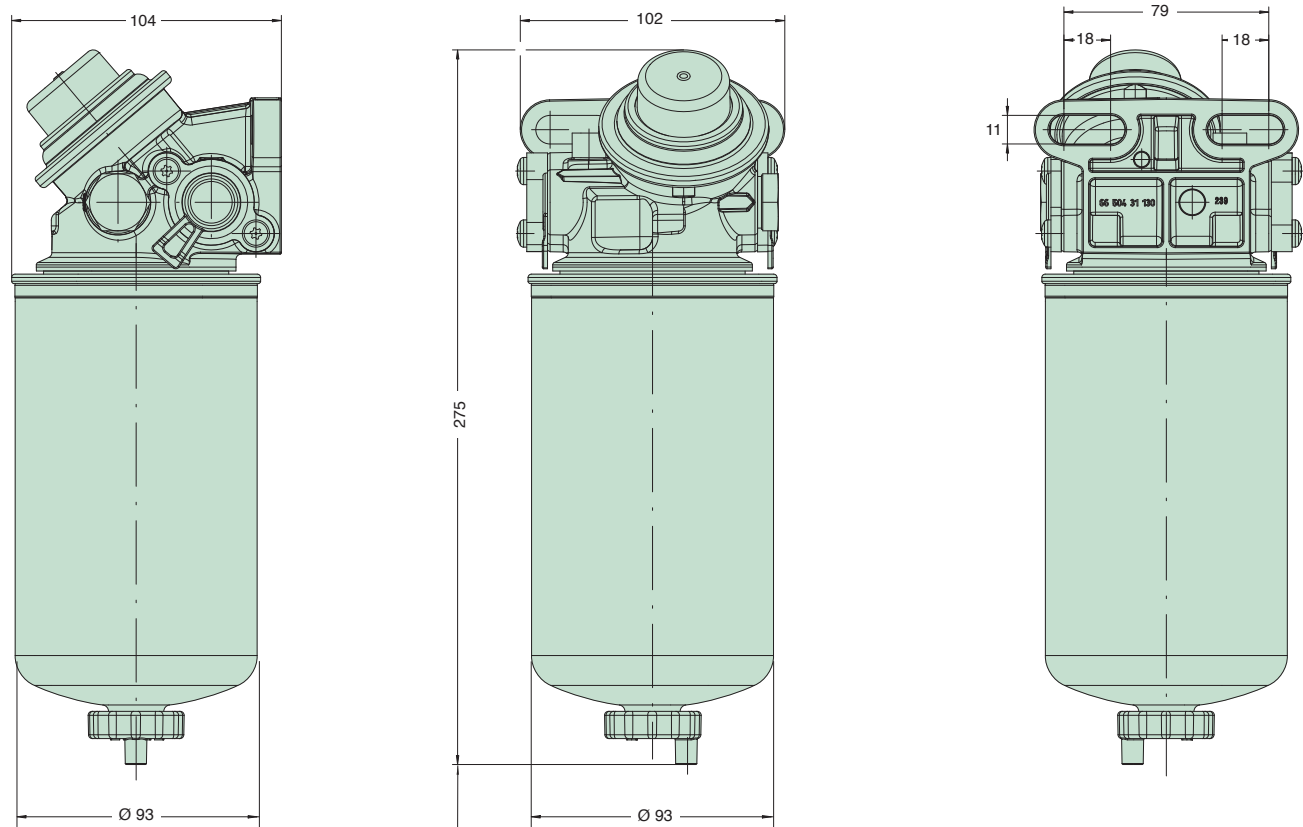
Description	Medium	Order number complete filter	MANN-FILTER spin-on filter	Water level sensor M12x1.5	Hand pump	Water collector	Diesel heater with bi-metal control	
							12 volt	24 volt
PreLine 250	PFO	66 504 62 140 66 504 62 144	PL 250	yes -	yes	integrated in spin-on filter	DH 12 (option)	DH 24 (option)
PreLine 250/1	PF	66 504 62 150 66 504 62 154	PL 250/1	yes -				



Spare parts list PreLine 250

Pos.	Description	Order number
1	Heater (option, incl. seal)	DH 12
		DH 24
2	Seal for heater	23 023 32 141
3	Seal for water drain screw plug	23 012 31 242
4	Water drain screw plug	21 012 05 341
5	Sensor M12x1.5	59 020 70 731
6	Seal for sensor M12x1.5	23 012 31 242

PreLine 250



Removal dimension for spin-on filter approx. 20 mm

Dimensions in mm



Specifications PreLine 250

Filter medium	Initial separation efficiency acc. to ISO 19 438:2003			PreLine 250	PreLine 250/1
	Classes	4 µm (c)	6 µm (c)		
	Multigrade F_PFO	≥ 10 %	≥ 30 %	X	
	Multigrade F_PF	≥ 40 %	≥ 70 %		X
Nominal volume flow rate				250 l/h	
Application	Pre-filter function with water separation			X	X
	Additional main filter function			-	-
Water separation	acc. to ISO/TR 16 332			> 93 %	
Operating pressure	Filter head and spin-on filter			4 bar	
Filter head	Connections	Inlet raw side		Right and left each with 2 x M16x1.5 Permanently installed hand pump Mounting for diesel heater right or left as required	
		Outlet clean side			

PreLine modular system (200 to 420 kW)

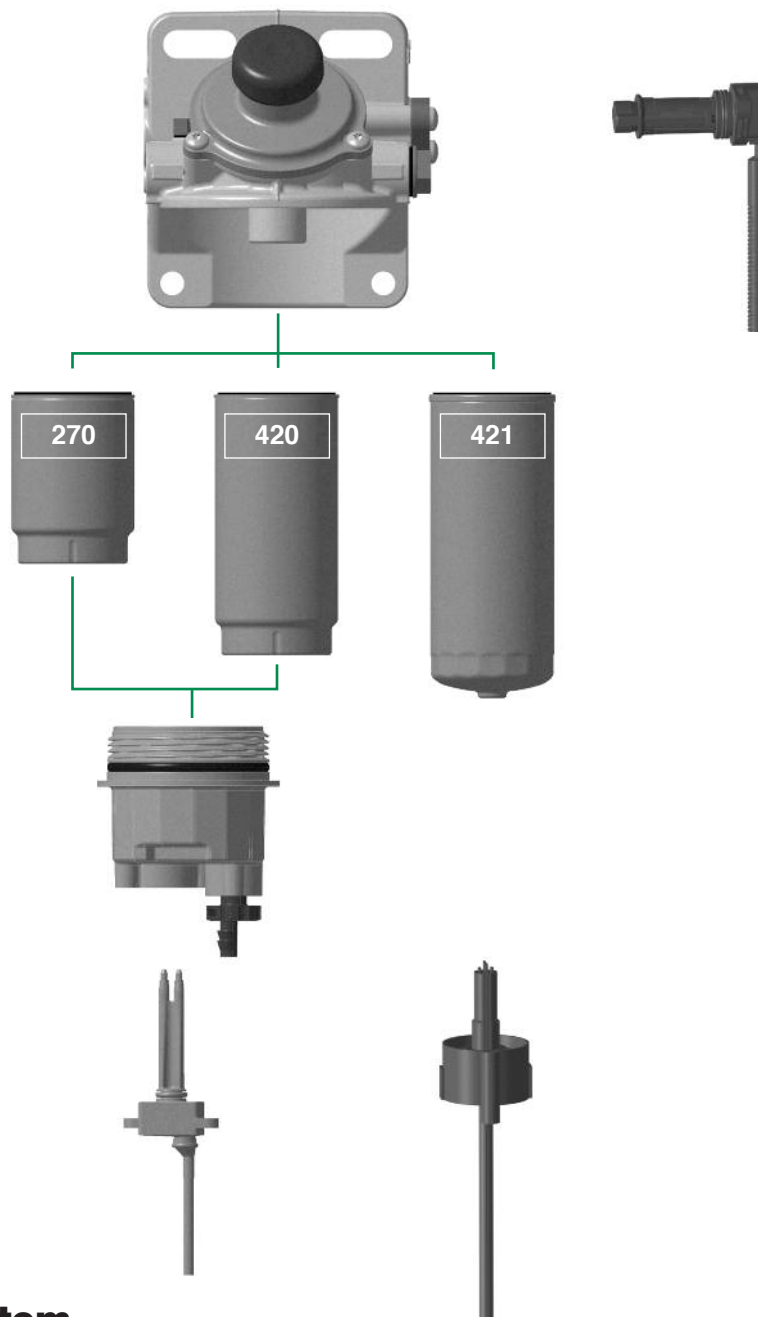
Filter head
with hand pump

Diesel heater
12 or 24 volt

Spin-on filter
PL 270 or PL 270/1
PL 420 or PL 420/1
PL 421 or PL 421/1

Water collector

Water level sensor
12/24 volt



Filtration with system

MANN+HUMMEL offers an especially compact modular system for diesel engines with outputs between 200 to approx. 420 kW.

This PreLine - series includes the following sizes:

PreLine 270
PreLine 270/1
PreLine 420
PreLine 420/1
PreLine 421
PreLine 421/1

Application areas

High performance filtration for all diesel aggregates from approx. 200 kW to 420 kW.

PreLine offers reliable protection against wear and corrosion caused by particles and water in modern common rail injection systems, in-line injection pumps and distribution injection pumps.

PreLine also perfectly protects every diesel engine under

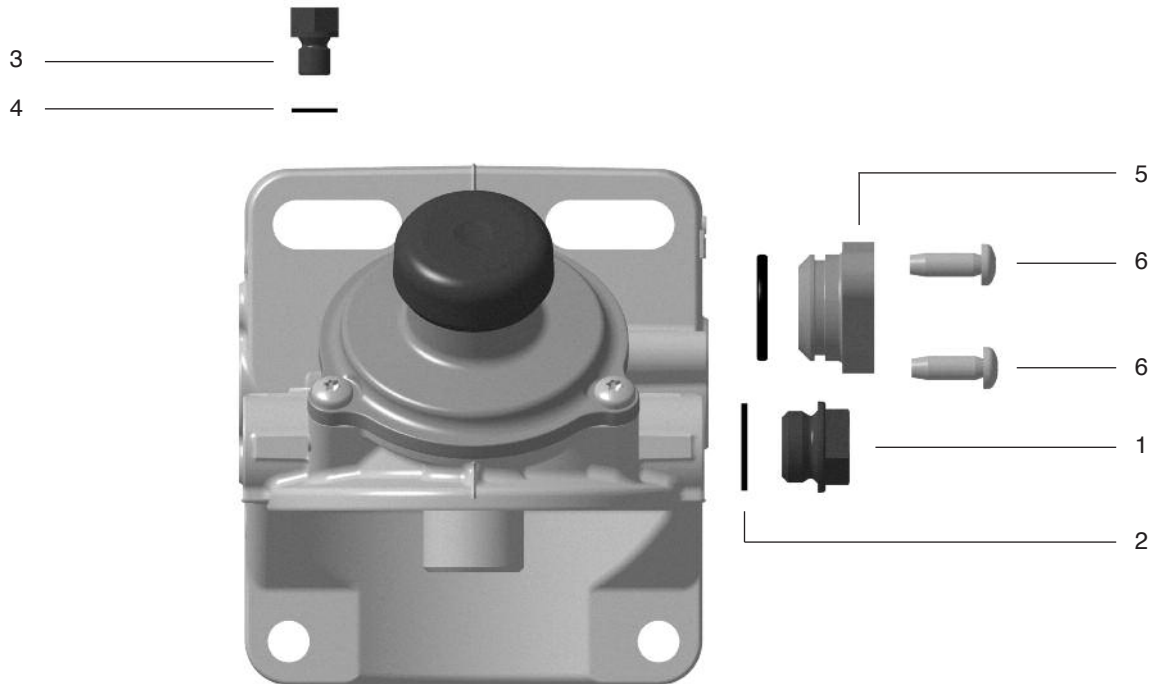
difficult conditions in construction machines and many other applications such as skid steer loaders, backhoe loaders, tractors, forklifts, mobile and stationary compressors.

The advantages at a glance:

- High performance filtration in a small installation space
- Easy handling
- 45° positioned hand pump

- Extremely stable design
- High water separation (e.g. $\geq 93\%$ acc. to ISO/TR 16 332)
- Up to 40 % particle separation for $4\text{ }\mu\text{m (c)}$ particles
- Diesel heater in 12 or 24 volt with up to 350 watt output (option)
- 12 and 24 volt compatible water sensors (option)
- Available with the external or integrated water collector

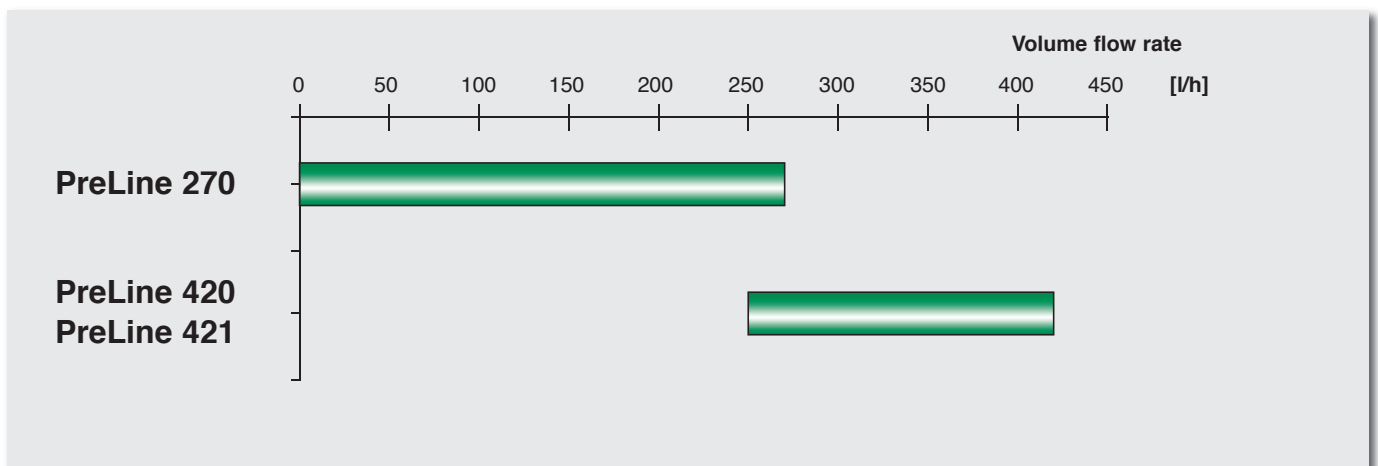
PreLine filter head (200 to 420 kW)



Spare parts list filter head PreLine

Pos.	Description	Order number
1	Screw plug inlet/outlet M16x1.5	01 440 16 001
1	Screw plug inlet/outlet M18x1.5	01 440 18 001
2	Seal for screw plug inlet/outlet M16	01 901 01 016
2	Seal for screw plug inlet/outlet M18	01 901 01 018
3	Screw plug for venting	21 008 05 271
4	Seal for venting screw plug	01 901 01 008
5	Sealing cover (incl. O ring)	66 606 47 141
6	Pins for sealing cover	01 163 06 018

Volume flow coverage



PreLine 270

Main features and advantages

- Use with diesel fuel
DIN ISO 590 (5 % FAME)
DIN 51 628 (7 % FAME)
- Up to 270 l/h volume flow rate
- Use of multigrade high performance media
- 93 % water separation
- Modular system with excellent flexibility
- Easy to service
- Integrated, effective and easy to handle hand pump with 45° position to drain off water and for priming during service

- Large external water collector
- Parallel operation possible with a number of systems

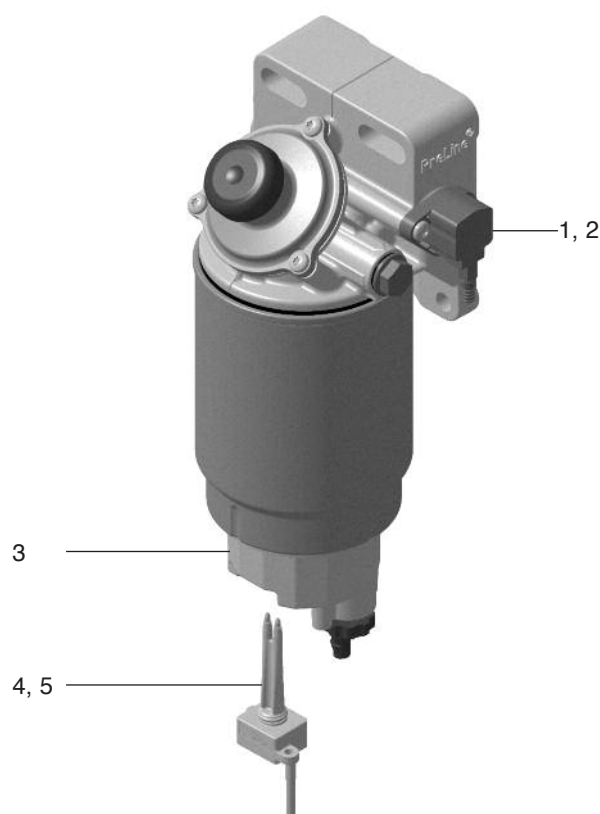
Application areas

All modern common rail diesel engines used in agricultural and construction machines and industrial aggregates.

Further specifications are listed on pages 28 and 29.



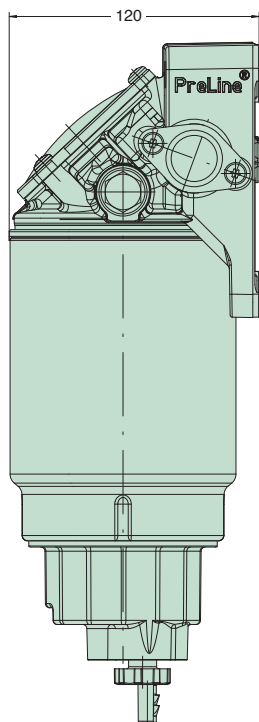
Description	Medium	Order number complete filter	MANN-FILTER spin-on filter	Water level sensor	Hand pump	Water collector	Diesel heater with bi-metal control	
							12 volt	24 volt
PreLine 270	PFO	66 604 62 261	PL 270 X	yes	yes	yes	DH 12 (option)	DH 24 (option)
		66 604 62 263		-	-			
		66 604 62 265		-	yes			
		66 604 62 267		yes	-			
PreLine 270/1	PF	66 604 62 251	PL 270/1 X	yes	yes	yes	DH 12 (option)	DH 24 (option)
		66 604 62 253		-	-			
		66 604 62 255		-	yes			
		66 604 62 257		yes	-			



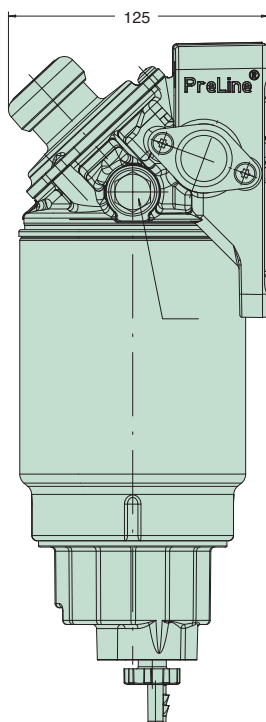
Spare parts list PreLine 270

Pos.	Description	Order number
1	Heater (option, incl. seal)	DH 12
2	Seal for heater	DH 24
3	Service kit (plastic water collector with drain screw incl. seals)	23 023 32 141
	Service kit suitable for PreLine with Water level sensor (plastic water collector with drain screw incl. seals)	66 606 49 200
	Service kit suitable for PreLine without Water level sensor (plastic water collector with drain screw incl. seals)	66 606 12 919
	Sealing ring for water collector is delivered with each new element with an "X". Example: PL 270 X	66 606 12 949
4	Sensor 70 mm (option, retrofit not possible)	not available separately
5	Sensor screw (2x)	59 020 70 772
		01 381 04 016

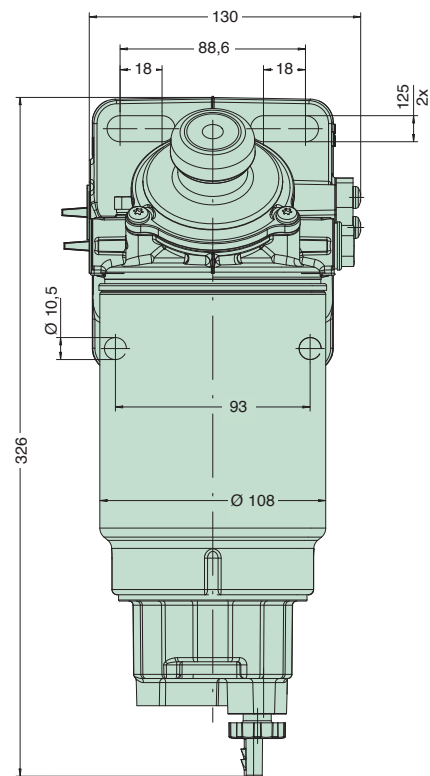
PreLine 270



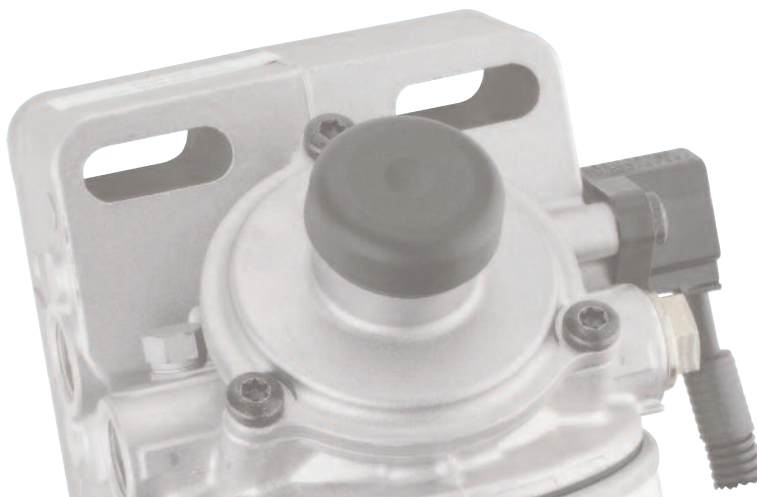
PreLine without hand pump



Dimensions in mm



Removal dimension for spin-on filter
min. 22 mm



Specifications PreLine 270

Filter medium	Initial separation efficiency acc. to ISO 19 438:2003			PreLine 270	PreLine 270/1
	Classes	4 µm (c)	6 µm (c)		
	Multigrade F_PFO	≥ 10 %	≥ 30 %	X	
	Multigrade F_PF	≥ 40 %	≥ 70 %		X
Nominal volume flow rate				270 l/h	
Application	Pre-filter function with water separation			X	X
	Additional main filter function			-	-
Water separation	acc. to ISO/TR 16 332			> 93 %	
Operating pressure	Filter head and spin-on filter			4 bar	
Filter head	Connections	Inlet raw side		Only left 1 x M18x1.5	
		Outlet clean side		With or without hand pump Mounting for diesel heater on right	

PreLine 420

Main features and advantages

- Use with diesel fuel
DIN ISO 590 (5 % FAME)
DIN 51 628 (7 % FAME)
- Up to 420 l/h volume flow rate
- Use of multigrade high performance media
- 93 % water separation
- Modular system with excellent flexibility
- Easy to service
- Integrated, effective and easy to handle hand pump with 45° position to drain off water and for priming during service

- Large external water collector
- Parallel operation possible with a number of systems

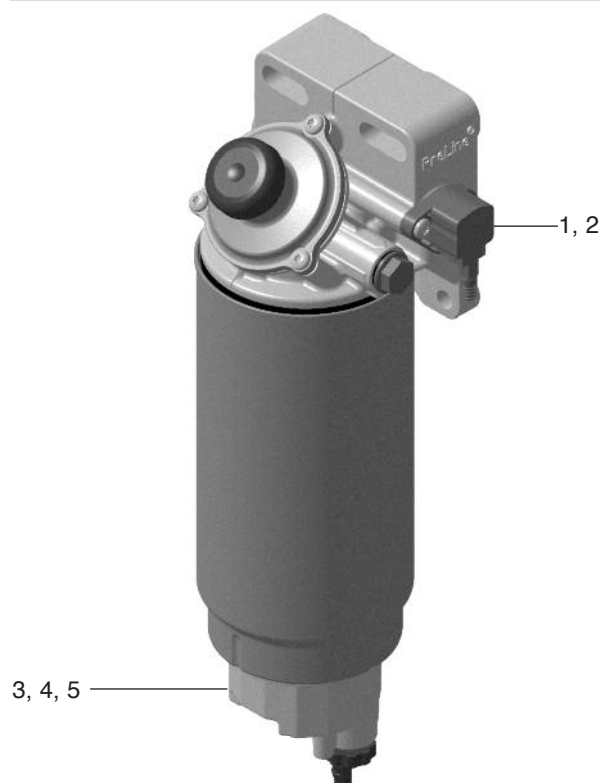
Application areas

All modern common rail diesel engines used in agricultural and construction machines and industrial aggregates.

Further specifications are listed on pages 28 and 29.



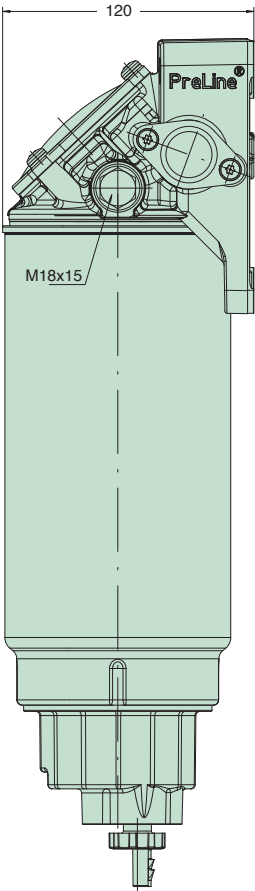
Description	Medium	Order number complete filter	MANN-FILTER spin-on filter	Water level sensor	Hand pump	Water collector	Diesel heater with bi-metal control	
							12 volt	24 volt
PreLine 420	PFO	66 606 62 261	PL 420 X	yes	yes	yes	DH 12 (option)	DH 24 (option)
		66 606 62 263		-	-			
		66 606 62 265		-	yes			
		66 606 62 267		yes	-			
PreLine 420/1	PF	66 606 62 251	PL 420/1 X	yes	yes	yes	DH 12 (option)	DH 24 (option)
		66 606 62 253		-	-			
		66 606 62 255		-	yes			
		66 606 62 257		yes	-			



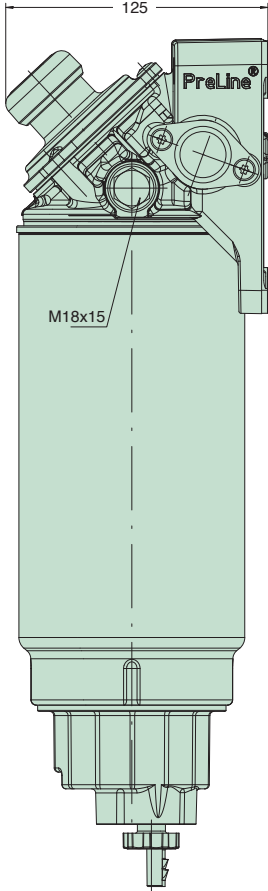
Spare parts list PreLine 420

Pos.	Description	Order number
1	Heater (option, incl. seal)	DH 12
		DH 24
2	Seal for heater	23 023 32 141
3	Service kit (plastic water collector with drain screw incl. seals)	66 606 49 200
	Service kit suitable for PreLine with Water level sensor (plastic water collector with drain screw incl. seals)	66 606 12 919
	Service kit suitable for PreLine without Water level sensor (plastic water collector with drain screw incl. seals)	66 606 12 949
	Sealing ring for water collector is delivered with each new element with an "X". Example: PL 420 X	not available separately
4	Sensor 70 mm (option, retrofit not possible)	59 020 70 772
5	Sensor screw (2x)	01 381 04 016

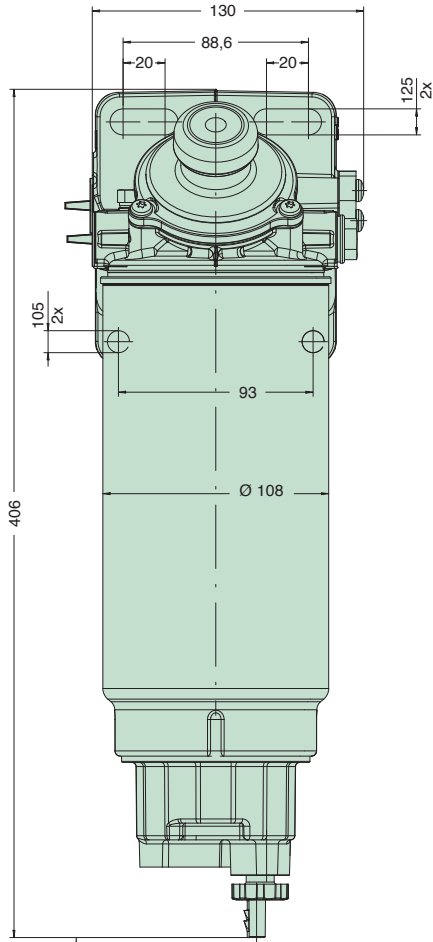
PreLine 420



PreLine without hand pump



Dimensions in mm



Removal dimension for spin-on filter
min. 22 mm

Specifications PreLine 420

Filter medium	Initial separation efficiency acc. to ISO 19 438:2003			PreLine 420	PreLine 420/1
	Classes	4 µm (c)	6 µm (c)		
	Multigrade F_PFO	≥ 10 %	≥ 30 %	X	
	Multigrade F_PF	≥ 40 %	≥ 70 %		X
Nominal volume flow rate				420 l/h	
Application	Pre-filter function with water separation			X	X
	Additional main filter function			-	-
Water separation	acc. to ISO/TR 16 332			> 93 %	
Operating pressure	Filter head and spin-on filter			4 bar	
Filter head	Connections	Inlet raw side		Only left 1 x M18x1.5 With or without hand pump Mounting for diesel heater on right	
		Outlet clean side			

PreLine 421

Main features and advantages

- Use with diesel fuel
DIN ISO 590 (5 % FAME)
DIN 51 628 (7 % FAME)
- Up to 420 l/h volume flow rate
- Use of multigrade high performance media
- 93 % water separation
- Modular system with excellent flexibility
- Easy to service
- Integrated, effective and easy to handle hand pump with 45° position to drain off water and for priming during service

- Integrated water collector
- Parallel operation possible with a number of systems

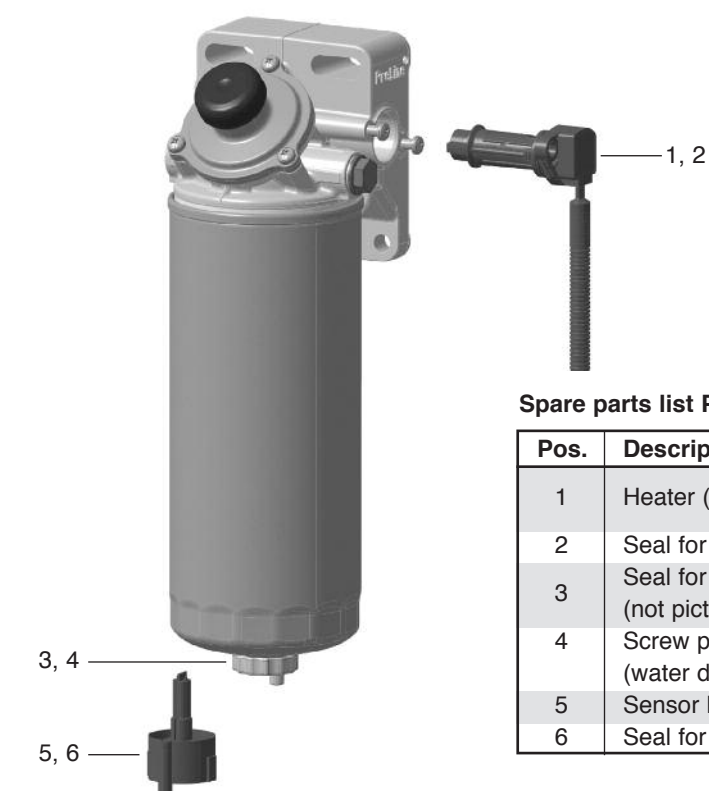
Application areas

All modern common rail diesel engines used in agricultural and construction machines and industrial aggregates.

Further specifications are listed on pages 28 and 29.



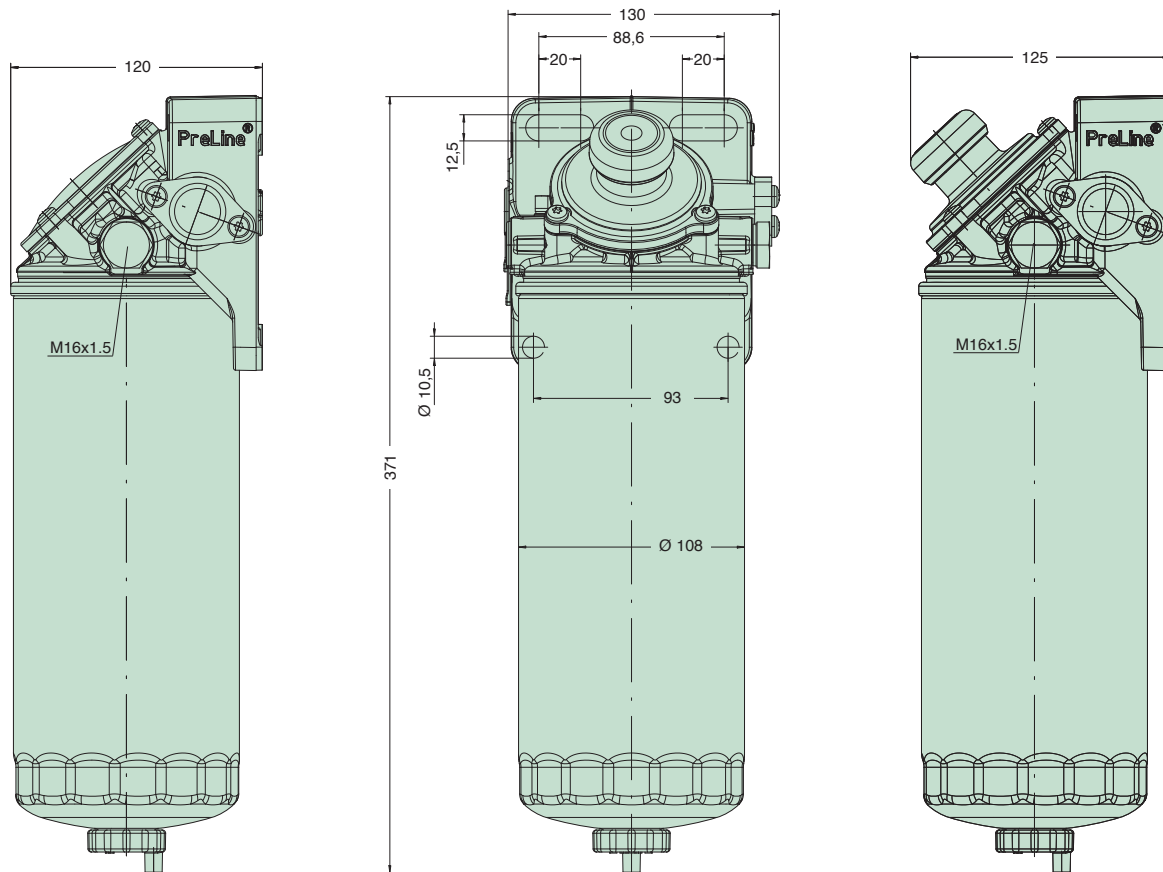
Description	Medium	Order number complete filter	MANN-FILTER spin-on filter	Water level sensor M12x1.5	Hand pump	Water collector	Diesel heater with bi-metal control	
							12 volt	24 volt
PreLine 421	PFO	66 607 62 110	PL 421	yes	yes	integrated in spin-on filter	DH 12 (option)	DH 24 (option)
		66 607 62 112		-	-			
		66 607 62 114		-	yes			
		66 607 62 116		yes	-			
PreLine 421/1	PF	66 607 62 100	PL 421/1	yes	yes			
		66 607 62 102		-	-			
		66 607 62 104		-	yes			
		66 607 62 106		yes	-			



Spare parts list PreLine 421

Pos.	Description	Order number
1	Heater (option, incl. seal)	DH 12
		DH 24
2	Seal for heater	23 023 32 141
3	Seal for water drain screw plug (not pictured)	23 012 31 242
4	Screw plug (water drain M12x1.5 incl. seal)	21 012 05 341
5	Sensor M12x1.5	10 517 67 S01
6	Seal for sensor M12x1.5	23 012 31 242

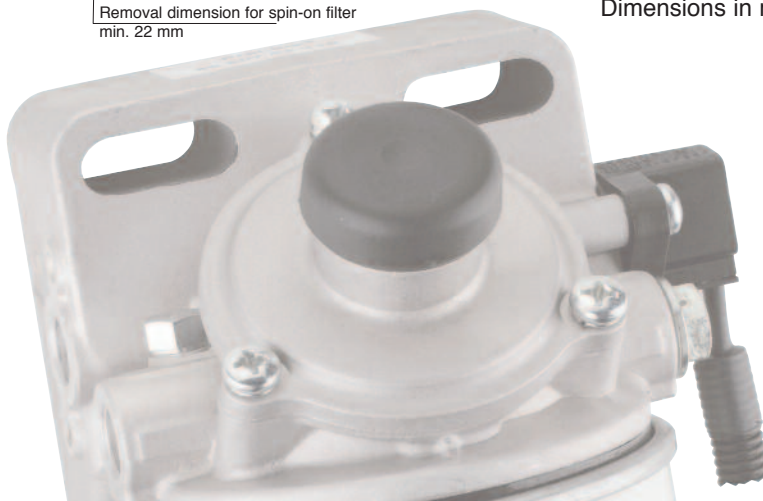
PreLine 421



PreLine without hand pump

Removal dimension for spin-on filter
min. 22 mm

Dimensions in mm



Specifications PreLine 421

Filter medium	Initial separation efficiency acc. to ISO 19 438:2003			PreLine 421	PreLine 421/1
	Classes	4 µm (c)	6 µm (c)		
	Multigrade F_PFO	≥ 10 %	≥ 30 %	X	
	Multigrade F_PF	≥ 40 %	≥ 70 %		X
Nominal volume flow rate				420 l/h	
Application	Pre-filter function with water separation			X	X
	Additional main filter function			-	-
Water separation	acc. to ISO/TR 16 332			> 93 %	
Operating pressure	Filter head and spin-on filter			4 bar	
Filter head	Connections	Inlet raw side		Only left 1 x M16x1.5 With or without hand pump Mounting for diesel heater on right	
		Outlet clean side			

PreLine – Accessories

Diesel heaters

The two diesel heaters DH 12 and DH 24 can be used to improve the flow in the filter system under cold start conditions with the aim of improving the cold start behaviour. Their respective heating output of 250 or 350 watts positively influences the viscosity of the diesel fuel at low temperatures.

Both heaters have built-in safety mechanisms whereby the heating elements limit themselves automatically due to a physical effect and cannot exceed a given maximum temperature.



Diesel heaters		Order number	
		DH 24	DH 12
Compatible to all PreLine filter systems		X	
Control		PTC / bi-metal	
Voltage		24 V DC	12 V DC
Output at -20 °C (ambient conditions + fuel)		350 W +12 % / -35 %	250 W ± 35 %
Operating voltage		16 to 32 V DC	8 to 16 V DC
Continuous current		Max. 14.5 A at Up = 27.6 V	Max. 18.5 A at Up = 13.5 V
Switch-on current		17.2 A at Up = 27.6 V DC	25 A at Up = 13.5 V
Temperatures	Surface heat exchanger	≤ 162 °C	
	In use	-30 °C to 95 °C	
	Switch-on point	-2 °C ± 3 °C	
	Switch-off point	+9 °C ± 3 °C	
Operating pressure		6 bar	
Protection rating		DIN 40 050 part 9 6K9K	

PreLine – Accessories

Water level sensors

MANN+HUMMEL water level sensors use the difference in water and diesel line resistance to recognise the respective medium. Depending on the respective connection, the signals can be processed by modern multi-function panels with a display and also used by simple display lamps. The sensors described here only have a single signal status which is active when a signal is present.

This option offers considerably more comfort. It is no longer necessary to regularly drain the separated water.



Water level sensors		Order number			
		59 020 70 730	59 020 70 731	59 020 70 772	10 517 67 S01
Compatible to the following PreLine filter systems	50 / 100 / 150	X			
	250		X		
	270 / 420			X	
	421				X
Output signal	Input	200 mA	150 mA	10 mA	300 mA
	No water	no signal (<15 mA)	11.8 V (<15 mA)	70 % - 76 % of U_s / U_{s2}	
	With water	signal (<200 mA)	1.9 V (<150 mA)	17 % - 23 % of U_s / U_{s2}	
Nominal voltage		12/24 V DC	12/24 Volt DC	12/24 V DC	12/24 V DC
Operating voltage		9 to 12 V DC	8 to 12 V DC	8 to 16 / 16 to 36 V DC	8 to 16 / 16 to 36 V DC
Operating temperature		-30 °C to 100 °C			
Protection rating	DIN 40 050 part 9	IPX9K	IPX4K / IPX9K	IP6K9K	

PreLine – Everything at a glance



Filter medium	Initial separation efficiency according to ISO 19 438:2003			PreLine 50	PreLine 50/1	PreLine 50/2	PreLine 150	PreLine 150/1	PreLine 100/2	PreLine 250	PreLine 250/1	PreLine 270	PreLine 270/1	PreLine 420	PreLine 420/1	PreLine 421	PreLine 421/1													
	Classes	4 µm (c)	6 µm (c)																											
	Multigrade F_PFO	≥ 10 %	≥ 30 %															X		X		X		X		X		X		
	Multigrade F_PF	≥ 40 %	≥ 70 %																X		X			X		X		X		X
	Multigrade HE	≥ 95 %	≥ 99.5 %																	X		X						X		
Nominal volume flow rate				50 l/h			150 l/h		100 l/h	250 l/h		270 l/h		420 l/h																
Application	Pre-filter function with water separation			X	X	X	X	X	X	X	X	X	X	X	X	X	X													
	Additional main filter function			-	-	X	-	-	X	-	-	-	-	-	-	-	-													
Water separation	acc. to ISO/TR 16 332			> 93 %																										
Water collector				80 ml						200 ml		350 ml		600 ml		500 ml														
Hand pump	Delivered volume per stroke			15 ml								12 ml																		
Operating pressure				4 bar																										
Filter head	Connections	Inlet raw side		Right and left each with 2 x M16x1.5								Only left 1 x M18x1.5				Only left 1 x M16x1.5														
		Outlet clean side		Permanently installed hand pump								With and without hand pump																		
				Mounting for diesel heater right or left as required								Mounting for diesel heater on right																		

Selection of MANN+HUMMEL product catalogues



Air cleaners

Europiclon
NLG filters
Vacuum filters

Catalogue order no.
19 941 10 100 (German)
19 941 10 101 (English)
Further languages on request



Liquid filters

Spin-on filters
Fuel filters
In-line filters

Catalogue order no.
19 942 10 100 (German)
19 942 10 101 (English)
Further languages on request



ProVent

The filter series for
crankcase ventilation

Catalogue order no.
19 944 10 100 (German)
19 944 10 101 (English)
Further languages on request



Air/oil separators for compressors and vacuum pumps

Air/oil separators
Air/oil boxes

Catalogue order no.
19 943 00 100 (German)
19 943 00 101 (English)
Further languages on request




MANN-FILTER

Filter elements in OEM matching
quality for construction and
agricultural machines:

- Air cleaners
- Oil filters
- Fuel filters
- Hydraulic filters
- Cabin filters

Catalogue order no.
19 939 24 600 multi-lingual

- 
- MANN+HUMMEL company
 - Joint venture company

MANN+HUMMEL Group

The MANN+HUMMEL Group is an international company with its headquarters in Ludwigsburg, Germany. The group employs approx. 14,400 people worldwide at more than 41 locations.

The company develops, produces and sells technically complex components for the automotive and other

industries. A key area is high quality filtration products for vehicles, engines and industrial applications. The OEM business with global market leaders and producers of vehicles, machines and installations defines the quality and performance of the group. Filters for the international aftermarket are sold under numerous inter-

national brands as well as under the MANN-FILTER brand.

MANN+HUMMEL Industrial Filters

The Industrial Filters Business Unit with its headquarters in Speyer, Germany is specialised in meeting the requirements of off-highway

vehicle and engine applications, compressed air and vacuum technology, mechanical engineering and plant construction. For these and other industrial fields MANN+HUMMEL Industrial Filters offers high performance products for the filtration and separation of air, gases and liquids.



MANN+HUMMEL GMBH, Business Unit Industrial Filters
 67346 Speyer, Germany, Telephone +49 (62 32) 53-80, Fax +49 (62 32) 53-88 99
 E-Mail: if.info@mann-hummel.com, Internet: www.mann-hummel.com